

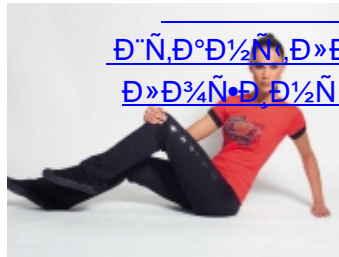
Magistral 2017,
Bahama Naturana

MAGISTRAL

Magistral 2017, Bahama Naturana



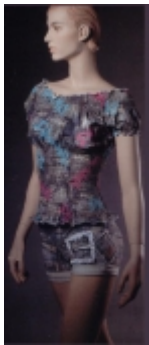
Magistral 2017, Bahama Naturana



Magistral 2017, Bahama Naturana



Magistral 2017, Bahama Naturana



Magistral 2017, Bahama Naturana



Magistral 2017, Bahama Naturana



Magistral 2017, Bahama Naturana

Đ•Đ°Đ•Đ²Đ°Đ¹½Đ,Đμ

Đ!ĐμĐ¹½Đ°

[Flora 1702](#)

[Đ'ĐμĐ»ÑŽÑ€Đ³⁄₄Đ²Ñ†Đ¹](#)

[Đ°Đ³⁄₄Ñ•Ñ,ÑŽĐ¹⁄₄Ñ•](#)

[ÑƒĐ'Đ»Đ,Đ¹⁄₂Ñ'Đ¹⁄₂Đ¹⁄₂Đ³⁄₄Đ¹](#)

[Đ°Đ³⁄₄Ñ„Ñ,Đ³⁄₄Đ¹.](#)

Flora 1702
Nic-Club.

Ñ€ÑƒĐ±.6 300.00



Nic-
Đ°Đ
ÑƒĐ
Đ!Đ
5XL
S(30

Đ•Ñ€Ñ,Đ,Đ°ÑƒĐ»

ĐœĐ°Đ»ĐμĐ¹⁄₂ÑœĐ°ĐÑ•
Đ°Đ°Ñ€Ñ,Đ,Đ¹⁄₂Đ°Đ°

Flora 1701

[Đ'ĐμĐ»ŃŽŃ€Đ¾Đ²Ń'Đ¹](#)

[Đ°Đ¾Ń•Ń,ŃŽĐ¼ Ń•](#)

[Ń†Đ²ĐμŃ,Đ¾Ń‡Đ½Đ¾Đ¹](#)

[Đ²Ń'Ń^Đ,Đ²Đ°Đ¾Đ¹.](#)

Flora 1701
Nic-Club

Ń€ŃfĐ±.6 300.00



Nic-
Đ°Đ
Đ²Ń
Đ¹Đ
4XL
Đ'Đ

[Honolulu ĐšĐ¼Ń„Ń.Đ° 3/4.](#)

Honolulu
Dilemma

Ń€ŃfĐ±.1 500.00



Dile
Đ°Đ

Đ°Đ
Ń•E
ĐĐĐ
Đ²Ń

Cruise 1602-2

[Đ±ÑfÑ,Đ±Đ¾Đ»Đ°Đ° Ñ•](#)

[Đ·Đ¾Đ»Đ¾Ñ,Đ¾Đ¹ Đ½Đ,Ñ,ÑŒÑŽ](#)

[Ñf Đ³Đ¾ÑŒĐ»Đ¾Đ²Đ,Đ¹½ÑŒ](#)

Cruise 1602-2

Nic Club

ÑŒÑfĐ±.1 500.00

Nic
Đ·Đ
Đ³Đ
Ñ•Đ
Đ°Đ

1502 DœD°D¹D°D°
Ñ•D²D³⁄₄D±D³⁄₄D´D½D°Ñ•.

Costa Marina
1502 Nic Club

Ñ€ÑƒD±.1 750.00

Nic-
D¼t

[1601 Ɓ'ƁμƁ»ŃŽŃ€Ɓ¼Ɓ²Ń'Ɓ¹
Ɓ°Ɓ¼Ń•Ń,ŃŽƁ¼ Ń•
Ɓ²Ń'Ń`Ɓ,Ɓ²Ɓ°Ɓ¼Ɓ¹ Ɓ½Ɓ°
Ń•Ɓ¿Ɓ,Ɓ½Ɓμ.](#)

1601 Lucia Nic
Club

Ń€ŃƒƁ±.5 500.00

Nic-
Ɓ°Ɓ
Ń•Ɓ

[Jadea 4545 ÐÑƒÑŒÑ,Ð±Ð¼Ð»Ð°Ð°Ð°](#)

Jadea 4545
Nic-Club

Ñ€ÑŒÐ±.1 500.00

Nic-
Ð°Ð°

[Jadea 4543 ÐœÐ°Ð¹Ð°Ð°](#)

Jadea 4543
Nic-Club

Ñ€ÑƒÐ±.1 500.00

Nic-
Ð°Ð°

Jadea 4537 ÐœÐ°Ð¹Ð°Ð°

Jadea 4537
Nic-Club

Ñ€ÑƒÐ±.1 500.00

Nic-
Ð°Ð°

Zulu Ð·Ð¼Ñ•Ð, Ð½Ñ	Zulu	ÐŸÐ¼Ð·Ð²Ð¼Ð½Ð, Ñ, Ðµ, Ñ±Ñ, Ð¼Ð±Ñ ÑƒÑ, Ð¼Ñ±Ð½Ð, Ñ, Ñœ Ñ†ÐµÐ½Ñƒ ÐŸÐ¼Ð·Ð²Ð¼Ð½Ð, Ñ, Ðµ, Ñ±Ñ, Ð¼Ð±Ñ ÑƒÑ, Ð¼Ñ±Ð½Ð, Ñ, Ñœ Ñ†ÐµÐ½Ñƒ	Dile
Coretz Ð»ÐµÐ³Ð³Ð, Ð½Ñ•Ñ	Coretz	ÐŸÐ¼Ð·Ð²Ð¼Ð½Ð, Ñ, Ðµ, Ñ±Ñ, Ð¼Ð±Ñ ÑƒÑ, Ð¼Ñ±Ð½Ð, Ñ, Ñœ Ñ†ÐµÐ½Ñƒ ÐŸÐ¼Ð·Ð²Ð¼Ð½Ð, Ñ, Ðµ, Ñ±Ñ, Ð¼Ð±Ñ ÑƒÑ, Ð¼Ñ±Ð½Ð, Ñ, Ñœ Ñ†ÐµÐ½Ñƒ	Dile
Loum Ð±ÑœÐ, Ð´Ð¶Ð	Loum	ÐŸÐ¼Ð·Ð²Ð¼Ð½Ð, Ñ, Ðµ, Ñ±Ñ, Ð¼Ð±Ñ ÑƒÑ, Ð¼Ñ±Ð½Ð, Ñ, Ñœ Ñ†ÐµÐ½Ñƒ ÐŸÐ¼Ð·Ð²Ð¼Ð½Ð, Ñ, Ðµ, Ñ±Ñ, Ð¼Ð±Ñ ÑƒÑ, Ð¼Ñ±Ð½Ð, Ñ, Ñœ Ñ†ÐµÐ½Ñƒ	Dile
Viana Ð´ÑœÐ, Ð´Ð¶Ð	Viana	ÐŸÐ¼Ð·Ð²Ð¼Ð½Ð, Ñ, Ðµ, Ñ±Ñ, Ð¼Ð±Ñ ÑƒÑ, Ð¼Ñ±Ð½Ð, Ñ, Ñœ Ñ†ÐµÐ½Ñƒ ÐŸÐ¼Ð·Ð²Ð¼Ð½Ð, Ñ, Ðµ, Ñ±Ñ, Ð¼Ð±Ñ ÑƒÑ, Ð¼Ñ±Ð½Ð, Ñ, Ñœ Ñ†ÐµÐ½Ñƒ	Dile
Cortez Ð´ÑœÐ, Ð´Ð¶Ð	Cortez	ÐŸÐ¼Ð·Ð²Ð¼Ð½Ð, Ñ, Ðµ, Ñ±Ñ, Ð¼Ð±Ñ ÑƒÑ, Ð¼Ñ±Ð½Ð, Ñ, Ñœ Ñ†ÐµÐ½Ñƒ ÐŸÐ¼Ð·Ð²Ð¼Ð½Ð, Ñ, Ðµ, Ñ±Ñ, Ð¼Ð±Ñ ÑƒÑ, Ð¼Ñ±Ð½Ð, Ñ, Ñœ Ñ†ÐµÐ½Ñƒ	Dile
Opposite-D049 Ð´ÑœÐ, Ð´Ð¶Ð	Opposite-D049	ÐŸÐ¼Ð·Ð²Ð¼Ð½Ð, Ñ, Ðµ, Ñ±Ñ, Ð¼Ð±Ñ ÑƒÑ, Ð¼Ñ±Ð½Ð, Ñ, Ñœ Ñ†ÐµÐ½Ñƒ	Dile
Dilemma.Zamora.Ð´Ñ, Ð°Ð½Ñ	Dilemma.Zamora	ÑœÑƒÐ±.1 000.00	Dile Ð´Ð Ð´

[Dilemma. Ventura.ĐœĐ°Đ¹Đ°Đ°](#)

Dilemma.
Ventura Japanes

Ñ€ÑƒĐ±.950.00

Dile

[Dilemma. Torreon. ÐœÐ°Ð¹Ð°Ð°.](#)

Dilemma.
Torreon.

Ñ€ÑƒÐ±.1 000.00

Dile
Ð¹Ð°

[Dilemma.Tamala.Đ-Đ.Đ»ĐμÑ,Đ°Đ°](#)

Tamala.

Ñ€ÑƒĐ±.1 300.00

Dile
Đ!Đ°
Đ!Đ°

[Dilemma. Sylmar.ĐœĐ°Đ¹Đ°Đ°](#)

Dilemma. Sylmar. Ñ€ÑƒĐ±.1 150.00

Dile

- « « Đ' Đ¹/₂Đ°Ñ†Đ°Đ»Đ³/₄
- « ĐỖÑ€ĐμĐ'Ñ«Đ'ÑfÑÑ%Đ°Ñ•
- 1
- 2
- 3
- 4
- 5
- ĐđĐ»ĐμĐ'ÑfÑŽÑÑ%Đ°Ñ• »
- Đ' Đ°Đ³/₄Đ¹/₂ĐμÑ† » »

Đ ĐμĐ·ÑfĐ»ÑƆÑ,Đ°Ñ,Ñ< 1 - 20 Đ,Đ· 89